

MICRO CALORIMETRIC LIQUID FLOW SENSOR - MCLFS

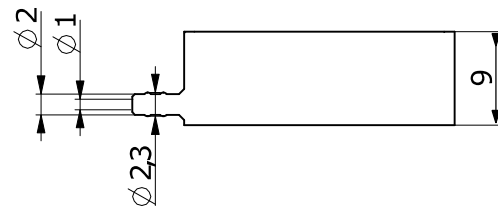
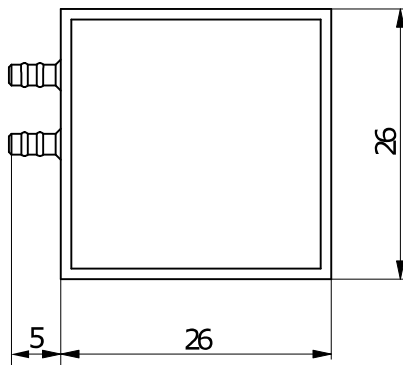
Features:

- ✚ Prototype product
- ✚ Small size
- ✚ Good repeatability
- ✚ Bio-compatible & inert materials
- ✚ Wide full scale flow rate



Specifications	MCLFS-LR	MCLFS-HR
Dimensions (mm)	26 x 26 x 10	26 x 26 x 10
Weight (g)	4.5	4.5
Operating temperature (°C)	5 – 50	
Fluidic connectors	Barbed tube connector, outer diameter 2 mm, length 5 mm, suitable for tubing 1/16" x 1/8	
Electrical connector	Flexible flat cable 4P, pitch 1.0mm	
Electrical controller	none	none
Materials in contact with medium	Thermoplastic polymer ABS, glass, polydimethylsiloxane (PDMS)	
Sensitivity, ($\mu\text{V}/\mu\text{lmin}^{-1}$)	10	600
Full scale flow rate ($\mu\text{l}/\text{min}$)	30	1500
Accuracy below full scale	1	1
Flow detection response time (s)	<2	<2
Recommended maximum operating pressure (bars)	3	3

(all data for medium H₂O, 23 °C, 1 bar unless otherwise noted)



Housing (black thermoplastic polymer ABS)

MICRO CALORIMETRIC LIQUID FLOW SENSOR - MCLFS

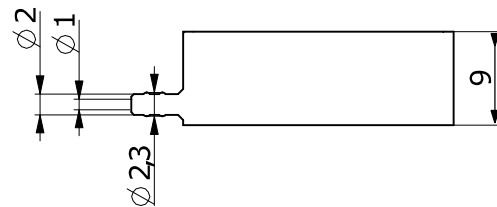
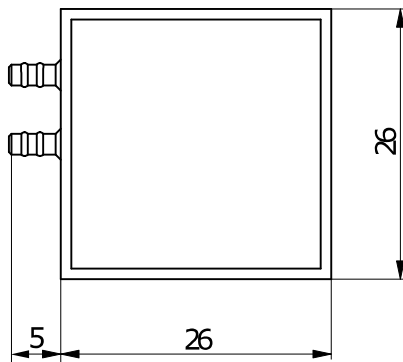
Features:

- ✚ Prototype product
- ✚ Small size
- ✚ Good repeatability
- ✚ Bio-compatible & inert materials
- ✚ Wide full scale flow rate



Specifications	MCLFS-LR	MCLFS-HR
Dimensions (mm)	26 x 26 x 10	26 x 26 x 10
Weight (g)	4.5	4.5
Operating temperature (°C)	5 – 50	
Fluidic connectors	Barbed tube connector, outer diameter 2 mm, length 5 mm, suitable for tubing 1/16" x 1/8	
Electrical connector	Flexible flat cable 4P, pitch 1.0mm	
Electrical controller	none	none
Materials in contact with medium	Thermoplastic polymer ABS, glass, polydimethylsiloxane (PDMS)	
Sensitivity, ($\mu\text{V}/\mu\text{lmin}^{-1}$)	10	600
Full scale flow rate ($\mu\text{l}/\text{min}$)	30	1500
Accuracy below full scale	1	1
Flow detection response time (s)	<2	<2
Recommended maximum operating pressure (bars)	3	3

(all data for medium H₂O, 23 °C, 1 bar unless otherwise noted)



Housing (black thermoplastic polymer ABS)